

A photograph of an office interior featuring a dark grey wall with several rectangular glass vision panels framed in light-colored wood. A white nameplate with the text "Office 17" and a blue circular sign are mounted on the wall. Two white rectangular panels are visible in the foreground, possibly representing different vision panel options. A semi-transparent grey box is overlaid in the center of the image, containing the text "DESIGN OPTIONS FOR VISION PANELS".

DESIGN OPTIONS FOR  
**VISION PANELS**

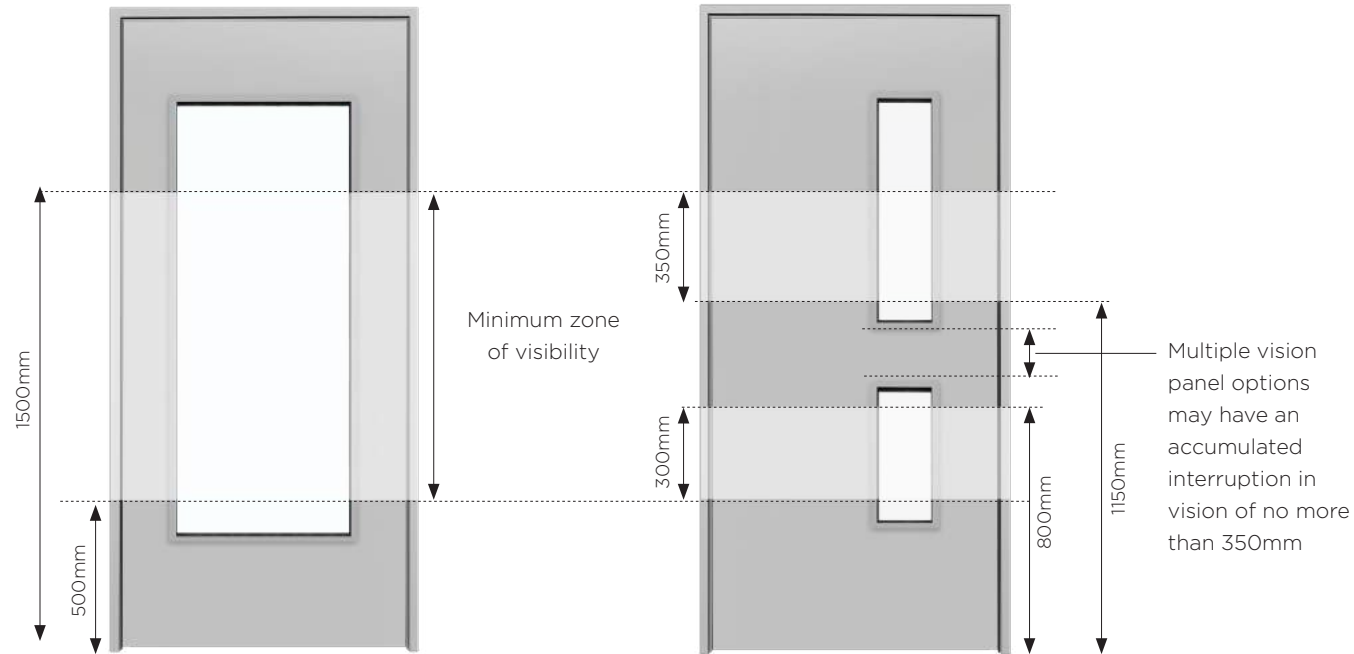
# VISION PANELS

## MINIMUM ZONES OF VISIBILITY

Many fire doors within education, healthcare and commercial sectors will include at least one vision panel per door leaf. The position of each vision panel must fall within the guidelines highlighted below to ensure of inclusivity where all types of users can benefit from the vision panel.

To ensure your fire doors are compliant with Building Regulations Part M: Mobility, we have provided a few diagrams to support correct design and specification criteria.

Please use these in conjunction with the latest building regulation codes to comply with compliance and relevant standards.



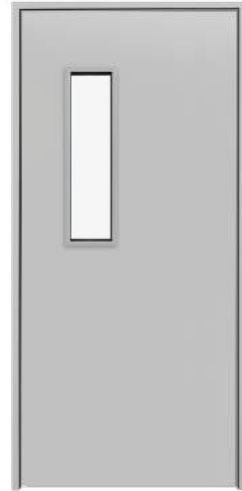
# VISION PANEL OPTIONS

The vision panels shown are our most commonly used designs.

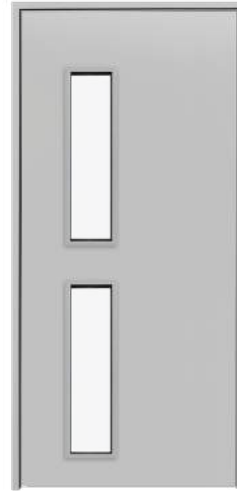
Alternative design options are available, subject to fire certification and minimum aperture margins.

Glazed bead dimensions and seal arrangements will vary depending on fire and acoustic certification.

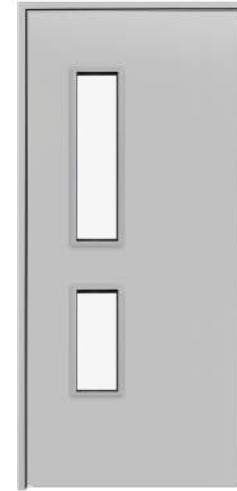
 In compliant with BS 8300 for wheelchair accessibility



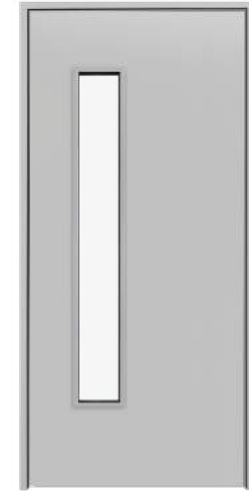
VP-A



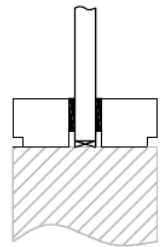
VP-B



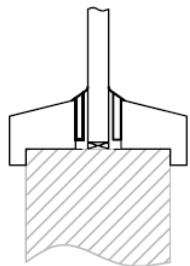
VP-C



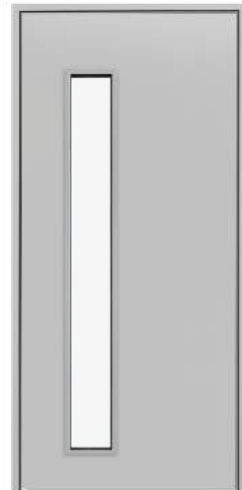
VP-D



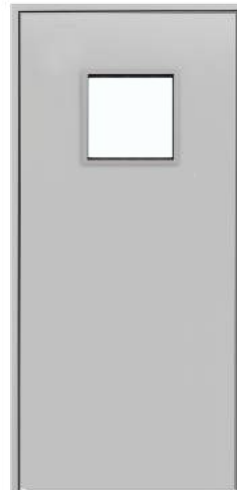
Flush - Hardwood



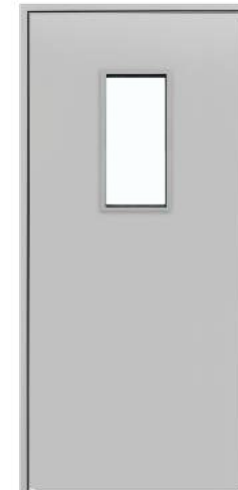
Bolection - Hardwood



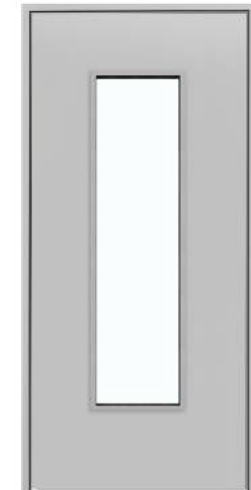
VP-E



VP-F



VP-G



VP-H



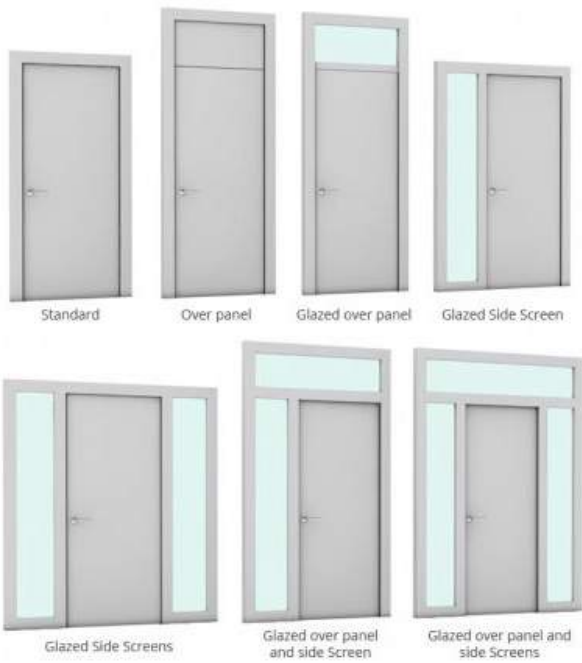


CONFIGURATIONS  
& FRAME TYPES

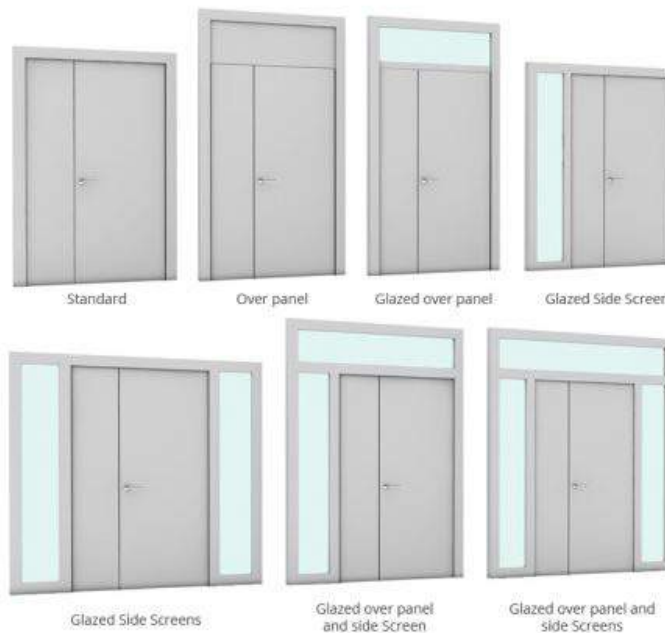
# CONFIGURATIONS

STANDARD CHOICES, BESPOKE AVAILABLE

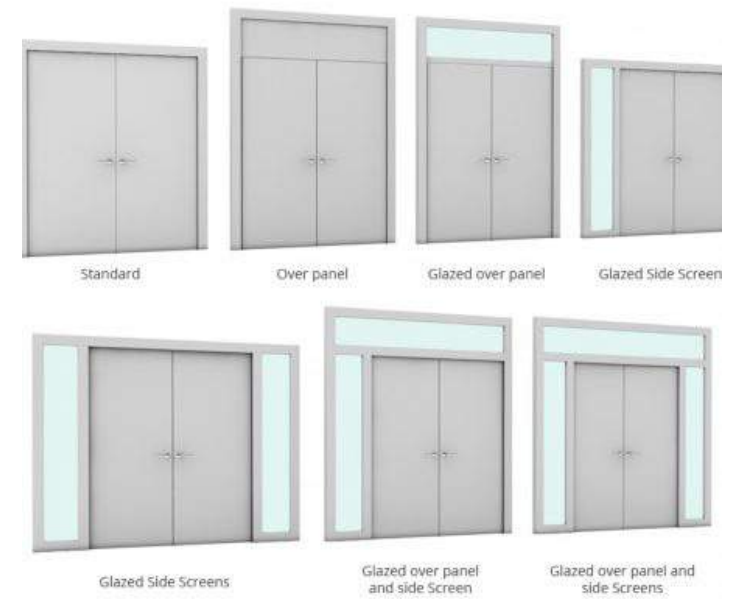
## SINGLE DOOR CONFIGURATIONS



## LEAF & HALF CONFIGURATIONS



## DOUBLE DOOR CONFIGURATIONS



Multiple screen option available, please contact us for more details - [info@aspex.co.uk](mailto:info@aspex.co.uk).



Let's work on specifications together, find us on...



**NBS Chorus**



**NBS Source**  
PARTNER

## FREE SAMPLES

Request for door leaf samples & ironmongery sample board to see how well we can match your project requirements.  
Simply email [sales@aspex.co.uk](mailto:sales@aspex.co.uk)

## GET IN TOUCH

[www.aspex.co.uk](http://www.aspex.co.uk) | [info@aspex.co.uk](mailto:info@aspex.co.uk)  
England office: 0116 278 3506  
Scotland office: 01236 720061

**aspex**