

aspex

Doorsets, Ironmongery & Access Control

HEALTHCARE PROJECTS

[www.aspex.co.uk](http://www.aspex.co.uk) | [info@aspex.co.uk](mailto:info@aspex.co.uk)



# ABOUT US

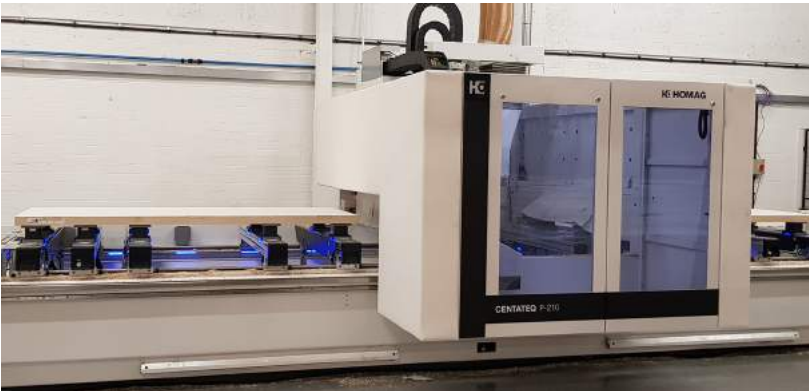
## ARCHITECTURAL EXCELLENCE

Aspex began as a dedicated ironmongery business in 2006, and we have since expanded our product range with doorsets, risers and access control to offer the complete interior fitout solution.

We introduced timber doorsets supply in 2012, began manufacturing doorsets in 2019 and now we have extended our factory by 40,000 sq ft to increase the production capacity and also to bring the production of technical door leaves in-house.

Our experienced project consultants can help you make well-informed decisions about any project from residential, accommodation, education, healthcare and commercial. We can help propose suitable doorset choices from door cores, configurations and finishes making sure the proposed options adhere with the required fire performance, regulatory compliance, budget, delivery timeframes and interior design visions. Our aim is to support you every step of the way, not just supply doorsets.

Speak to our team about design choices, industry standard or bespoke options, estimating & scheduling, sampling, optimised delivery plans and maintenance tips and more.



**2006**

Established in 2006, Aspex was founded on a long-established family history of success, dedication and innovation within the architectural ironmongery industry.

**2010**

Introduced access control and integrated systems division. Aspex are Platinum Inspired Business Partners of Salto and work closely with many other manufacturers to secure your premises

**2012**

Introduced supplying timber doorsets working closely with carefully selected door manufacturers

**2016**

Introduced Novista concealed doorsets, pocket sliding doors and risers

**2019**

Introduced manufacturing of timber doorsets in-house

**2023**

Extending factory by 40,000sqft to increase capacity and to bring the production of technical door leaves in-house.

Separate division formed for the manufacture and supply of doorsets for the education, healthcare and commercial sectors



## DOORSETS INSIGHT

New 40,000sq ft manufacturing facility since Summer 23

### RIGHT NOW

900

doorsets manufacturing capacity (per week)

### MOVING FORWARD

1,200

doorsets manufacturing capacity (per week)



## TRUSTED MANUFACTURER

We follow strict guidelines to ensure our fire-rated doorsets are manufactured in accordance with the IFC certification scheme (IFCC) which involves auditing our processes, factories and supply chain to ensure of full compliance.



We can share current certificates & arrange project specific tests



Upon project completion, detailed O&M manual provided with helpful maintenance information



Regular audits ensure doors are manufactured in align with latest regulations



Door leaf cores are carefully sourced - the credible manufacturers of these door cores have undertaken extensive fire testing with UKAS accredited companies.



All fire doors are labelled for golden thread of traceability



Upon project completion, detailed O&M manual provided with helpful maintenance information

A photograph of a modern hospital hallway. The walls are white, and the floor is a light grey. On the left, there is a row of doors, including a glass door. A white medical cart with various equipment is visible in the room through the glass door. A sign on the glass door reads "Access Controlled Automatic Door".

PERFORMANCE-DRIVEN  
DOORSETS

# CONSULTING ROOMS

High-quality, durable doorsets available with vision panels and side screens to promote the transition of natural light into internal spaces.

## PERFORMANCE

Fire Rating - Ranging from FD30 up to FD120  
Fire rated and manufactured in accordance with the International Fire Consultants Third Party Certification scheme (IFCC)

Acoustic Rating -  
Rating up to 40dB Rw

Severe Duty -  
Tested to BS EN 1192/DD171 classified as grade 4 severe duty & tested to EN 1191 BM Trada certified

## VISION PANELS

Standard vision panel style details, DDA compliant to BS 8300:2009

- Single narrow vision panel
- Single wide vision panel
- Narrow split vision panels
- Wide split vision panels
- Fully glazed
- Privacy blinds

## CONFIGURATIONS

- Single
- Leaf & Half
- Side Screen

## FINISHES

- Veneered
- Laminated
- PVC
- Painted

## ACCESS CONTROL

Standalone access controlled (Salto recommended)



# CIRCULATION & PUBLIC SPACES

High performance, durable doorsets designed for high traffic circulation and communal areas

## PERFORMANCE

Fire Rating - NFR or FD30/FD60S Fire rated and manufactured in accordance with the International Fire Consultants Third Party Certification scheme (IFCC)

The pre-hung factory doorset can meet the requirements for clear opening widths within approved Document M

## Severe Duty -

Tested to BS EN 1192/DD171 classified as grade 4 severe duty & tested to EN 1191 BM Trada certified

## DESIGN

- Standard
- Full height
- Vision panels
- Double action

## CONFIGURATIONS

Single  
Double doors  
Leaf & Half  
Side Screen

## FINISHES

Veneered  
Laminated  
PVC  
Painted

## ACCESS CONTROL

Network access controlled (Salto recommended)



# STORE ROOM & CUPBOARDS

Resilient doorsets designed for high-traffic circulation and public spaces with attention to finish for durability, suitable design options for convenience.

## PERFORMANCE

Fire Rating - NFR or FD30/FD60S Fire rated and manufactured in accordance with the International Fire Consultants Third Party Certification scheme (IFCC)

## SPECIFICATION

Manufactured with a solid core

- Door leaf constructed from a severe duty core tested to DD171, with hardwood lippings on all 4 sides
- Standard sizes or bespoke available

## DOOR FINISHES

Veneered  
Laminated  
PVC

## ACCESS CONTROL

Standalone access controlled (Salto recommended)



# ACOUSTIC DOORS

This sound-proof door is supplied as a complete doorset. Ideal choice for areas requiring above average levels of sound insulation.

## SPECIFICATION

- High Density GDC or solid timber laminated core
- Manufactured with a solid core, hardwood lipping on 4 sides. The door leaf is available either Laminated, Veneered, Factory Painted or Primed.
- 8mm hardwood lippings to all 4 sides. Lipping edge can match or contrast the face finish
- Overall thickness: 44mm (32dB), 54mm (35dB), 59mm (43dB), 84mm (48dB)
- Bespoke sizes -  
930mm max (w), 2330mm max (h)

## PERFORMANCE

- Fire Rating - NFR or up to FD120
- Acoustic Rating - 30dB to 48dB
- Tested to BS EN 1192 / DD171 and classified as grade 4 severe duty
- Manufactured to ISO 9001 standards

## DOOR FINISHES

Veneered  
Laminated  
PVC

## CONFIGURATIONS

Single, double, leaf & half  
and other choices  
Vision panel options

## ACCESS CONTROL

Standalone access controlled (Salto recommended)





# LEAD-LINED DOORS

Bespoke lead-lined X-ray doorsets for radiation protection designed for radioactive environments. Manufactured in align with latest hygiene regulations (NHS HTM 58).

## DOOR PROTECTION

Manufactured to the required lead equivalence as specified by your Radiation Protection Advisor (RPA), the below table highlights the lead code to suit the RPA requirement:

RPA LEAD SHIELDING REQUIREMENT	LEAD EQUIVALENCE USED
1.0mm	Code 3 (1.32mm)
1.5mm	Code 4 (1.80mm)
2.0mm	Code 5 (2.24mm)
2.5mm	Code 6 (2.65mm)
3.0mm	Code 7 (3.15mm)
3.5mm	Code 8 (3.55mm)

## CONFIGURATIONS

- **Hinged** - Ranging from 4mm Pb to 20mm Pb
- **Single** - Doorsets leaded frame and architrave ensure lead coverage between the door and the wall
- **Double** - Double or leaf-and-a-half configuration. Leaded rebated meeting stile between doors ensures of full radiation protection
- **Sliding** - The leaded leaf is fixed to a pelmet/track and overlaps with the wall to give radiation shielding coverage around its entire perimeter



# NOVISTA STEEL RISERS

## FRAME

Concealed/Picture frame design made from 1.2mm steel. 3 or 4 sided frame options

## LEAF

Double skin 1.0mm Zintec Steel with glass wool insulated core. 48mm thick

## CONFIGURATIONS

Single leaf, double leaf and up to six leaves within one frame

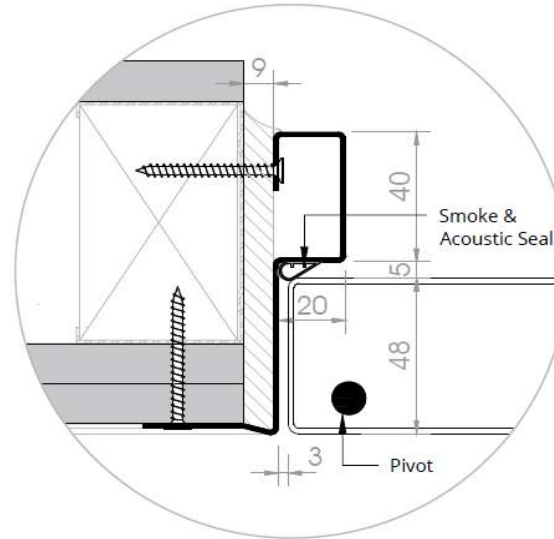
## PERFORMANCE

Fire Rating - FD120(S)

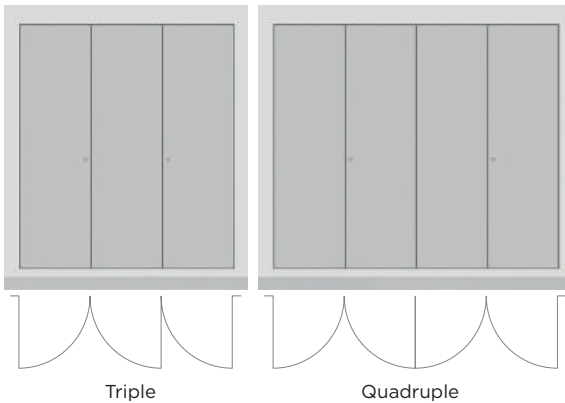
Acoustic Rating - 41dB Rw (as standard)

Smoke/Air tested - To BS6375-1, BSEN1634-3 and to BSEN13501-2

Thermal Resistance - 1.43(m2K)/W



## POPULAR CONFIGURATIONS



\*More options available



# NOVISTA TIMBER RISERS

## FRAME

Concealed/Picture frame design made from 1.2mm steel. 3 or 4 sided frame options

## LEAF

Solid core to suit application\*

FD30, up to 2500mm high and 800mm wide  
leaves\*FD60, up to 2420mm high and 850mm wide\*

## CONFIGURATIONS

Single leaf & double leaf

## PERFORMANCE

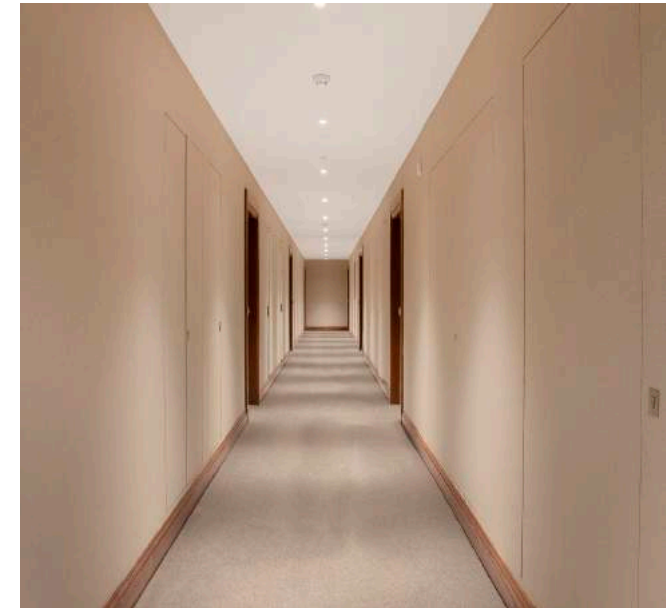
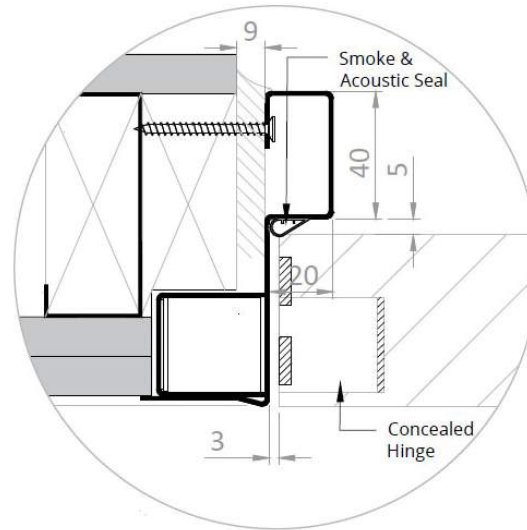
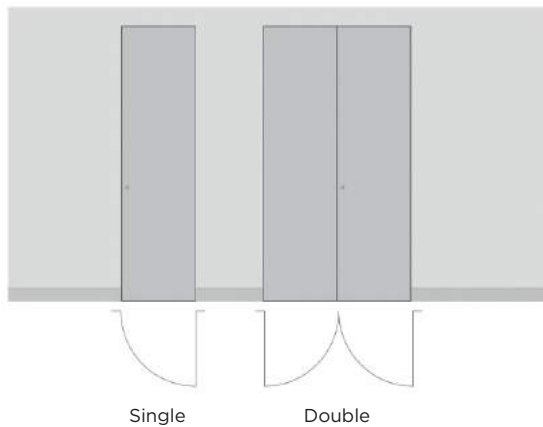
Fire Rating - FD30/60

Acoustic Rating - up to 35dB Rw

Smoke/Air tested - To BS6375-1, BSEN1634-3  
and to BSEN13501-2

Thermal Resistance - Consult technical dept.

## POPULAR CONFIGURATIONS



# MORE DESIGN FEATURES

## BI-FOLDING

Bi-folding doors can be sliding or folding to enhance functionality and access, ideal solutions when space is limited. This innovative two-leaf interconnected door solution reduces door swing area while maximising clear opening widths, in align with Approved Document M and BS 8300:2001.

Bi-folding doors are recommended for outward opening WC doors, door openings onto landings, lobbies with space required for wheelchair access, sanitary accommodation doors opening outward onto circulation spaces etc.

These smart bi-folding door solutions can be NFR or FD30 in align with IFC certification and BS476 Part 22 1987, and they are fire and smoke resistance.

## DOUBLE-ACTION

Double-action doors, also known as double-swinging doors, are practical door solutions that can swing in both directions enhancing convenience.

These solutions are most commonly used in hospitals, healthcare clinics, where the door must open in both directions in the case of emergencies allowing staff and patients fast, smooth movement.

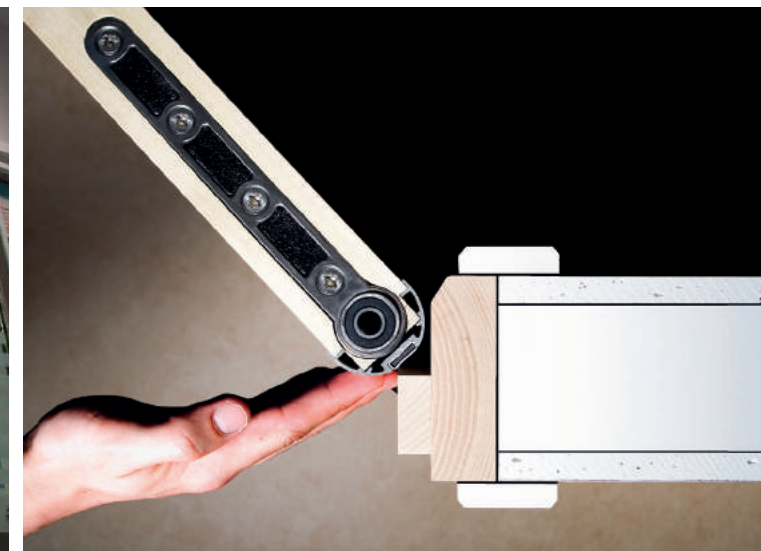
For example, if someone is in distress and locked in a room then the door cannot open inwards because it is blocked, these doors can be opened outward too allowing assistance and care to be provided to the person. Also, an ideal solution for disabled toilet doors that need to be able to open inwards and outwards.

## FINGER PROTECTION

Safehinge is a smart, protective finger safe protection solution preventing crushing and shearing of fingers (suited for both adults and children).

The system's sleek design integrates perfectly with the door and frame making it the most unobtrusive finger protection system available. The aluminium profile that fits onto the edge of the door has an integral pivot and top centre for single or double action doors. If the doors are required to self-close, a standard overhead door closer can be used on single swing doors and a floor spring or transom closer on double swing doors.

This solution is suitable for single or double action doors, fire tested with FD30 or FD60 doors with acoustic rating up to 38dB (glazed doors) They are fully compliant with Approved Documents and can be incorporated into all design applications, in align with severe duty DD171.





DESIGN OPTIONS FOR  
**VISION PANELS &  
CONFIGURATIONS**

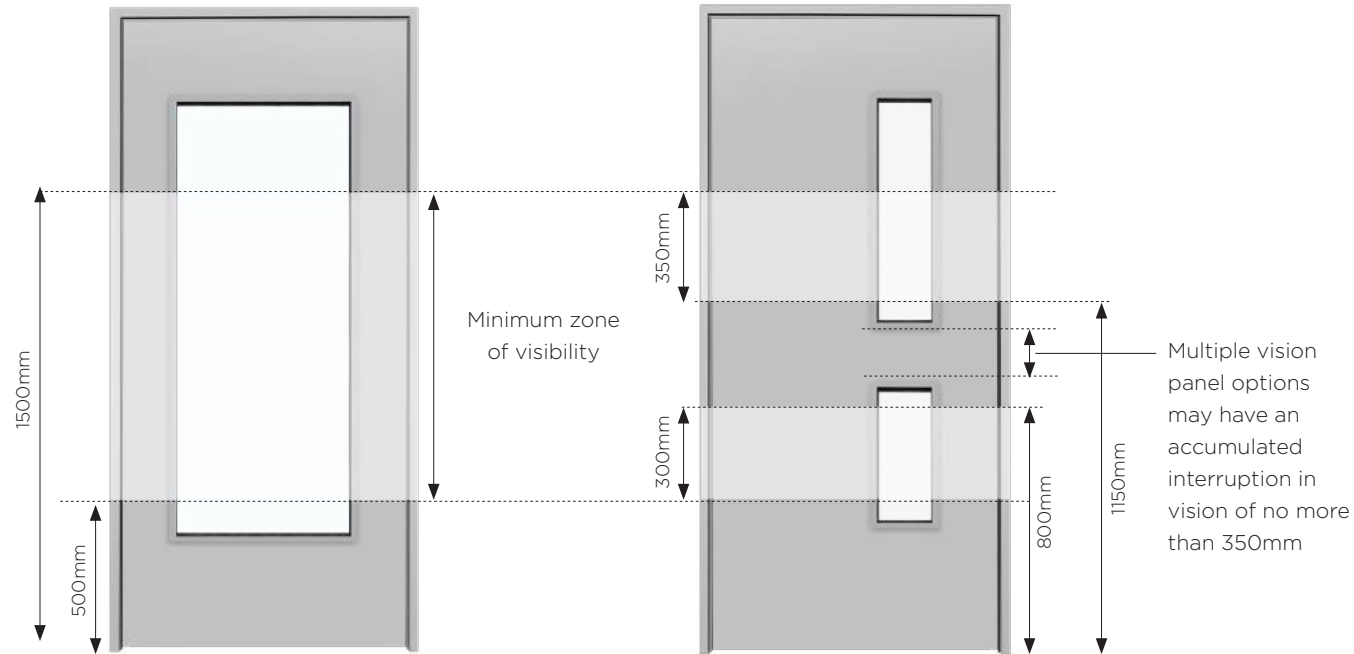
# VISION PANELS

## MINIMUM ZONES OF VISIBILITY

Many fire doors within education, healthcare and commercial sectors will include at least one vision panel per door leaf. The position of each vision panel must fall within the guidelines highlighted below to ensure of inclusivity where all types of users can benefit from the vision panel.

To ensure your fire doors are compliant with Building Regulations Part M: Mobility, we have provided a few diagrams to support correct design and specification criteria.

Please use these in conjunction with the latest building regulation codes to comply with compliance and relevant standards.



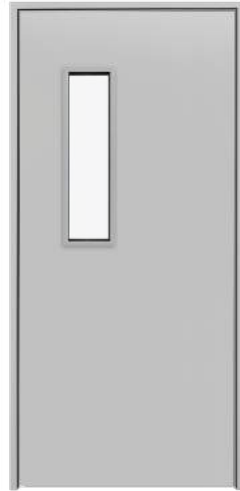
# VISION PANEL OPTIONS

The vision panels shown are our most commonly used designs.

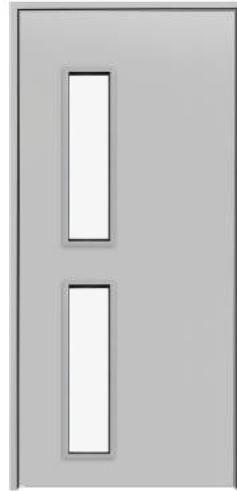
Alternative design options are available, subject to fire certification and minimum aperture margins.

Glazed bead dimensions and seal arrangements will vary depending on fire and acoustic certification.

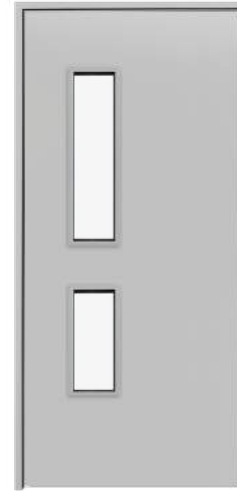
 In compliant with BS 8300 for wheelchair accessibility



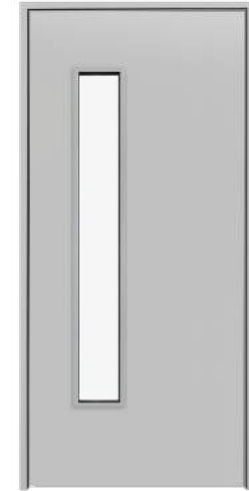
VP-A



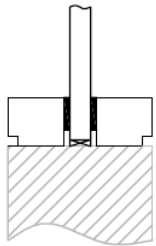
VP-B



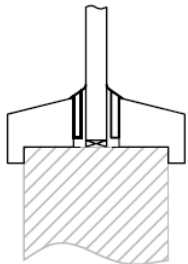
VP-C



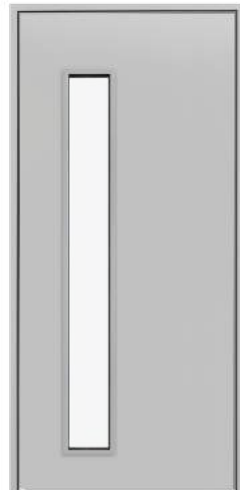
VP-D



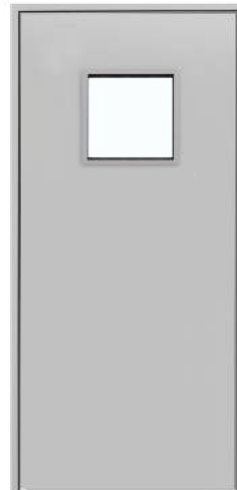
Flush - Hardwood



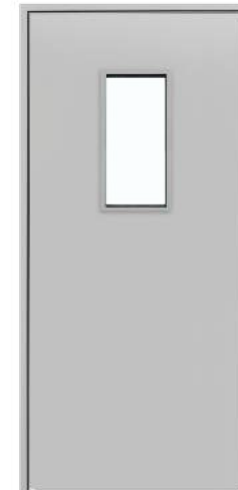
Bolection - Hardwood



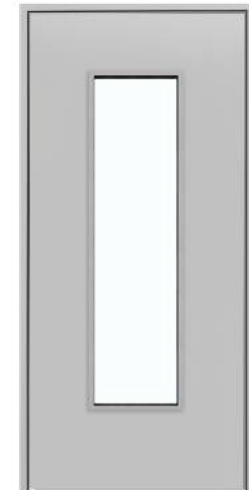
VP-E



VP-F



VP-G



VP-H





## PIONEERING GLAZED PRIVACY VISION PANELS

For several years, we have been working with Vistamatic to offer Vistamatic world-leading glazed privacy vision panels; the ideal selection for hospitals and mental care facilities.

Vistamic panels are designed for healthcare environments to protect privacy and support essential observation and monitoring.

There are a wide range of products to support the diverse requirements of patient support.





# VISTAMATIC

## ANTI-LIGATURE



High integrity glazing placed inside a stainless steel frame and is operated by a lockable key or an anti-ligature thumb turn

### GLAZING OPTIONS

- Toughened Glass
- Laminated
- Fire Rated - FD30 and FD60 Acoustic
- Standard: 404mm X 404mm and 800mm X 250mm
- Bespoke: Width - 150mm to 1000mm; Height - 200mm to 1500mm

### SIZE OPTIONS

- Standard Sizes are:  
404mm X 404mm and 800mm X 250mm
- Bespoke size available:  
Width from 150mm to 1000mm;  
Height from 200mm to 1500mm

## BLACKOUT



Viewing aspect remains the same while the panel is open but when closed, 97-98% light is filtered out

### GLAZING OPTIONS

- Toughened Glass
- Laminated
- Fire Rated - FD30 and FD60
- Acoustic
- Lead
- Laser\*

### SIZE OPTIONS

- Standard Sizes are: 404mm X 404mm and 800mm X 250mm
- Bespoke size available\*:  
Width from 150mm to 1000mm;  
Height from 200mm to 1500mm

## SLIDE



Vista Slide is perfect for doors where greater observation is needed as well as walls/partitions to monitor corridor

### GLAZING OPTIONS

- Toughened Glass
- Laminated
- Fire Rated - FD30 and FD60
- Acoustic
- Lead
- Laser

### SIZE OPTIONS

- Bespoke size available:  
Width up to 1500mm;  
Height up to 1200mm

### HANDLE OPTIONS

- Standard lever
- Large lever
- Key locking
- Thumb turn

# VISTAMATIC

## MAX



Secure, triple glazed system allows secure observation whilst maintaining the appearance of a contemporary Venetian style blind

### GLAZING OPTIONS

- Toughened Glass
- Laminated
- Fire Rated - FD30 and FD60
- Acoustic
- Lead
- Laser\*

### SIZE OPTIONS

- Standard Sizes are: 404mm X 404mm and 800mm X 250mm
- Bespoke size available\*:  
Width from 150mm to 1000mm;  
Height from 200mm to 1500mm

## MAX XL



Vista Slide is perfect for doors where greater observation is needed as well as walls/partitions to monitor corridor

### GLAZING OPTIONS

- Toughened Glass
- Laminated
- Fire Rated - FD30
- Acoustic
- Lead
- Laser\* (Restrictions may apply)

### SIZE OPTIONS

- Bespoke size available:  
Width from 175mm to 500mm;  
Height from 1100mm to 1500mm

## LEAD & LASER PROTECTION



Hand-crafted vision panels with either lead glass or with a laser polymer/vinyl shield suitable for rooms involving x-rays, lasers or radiation

### GLAZING OPTIONS

- Toughened Glass
- Laminated
- Fire Rated - FD30 and FD60
- Acoustic
- Lead
- Laser\*

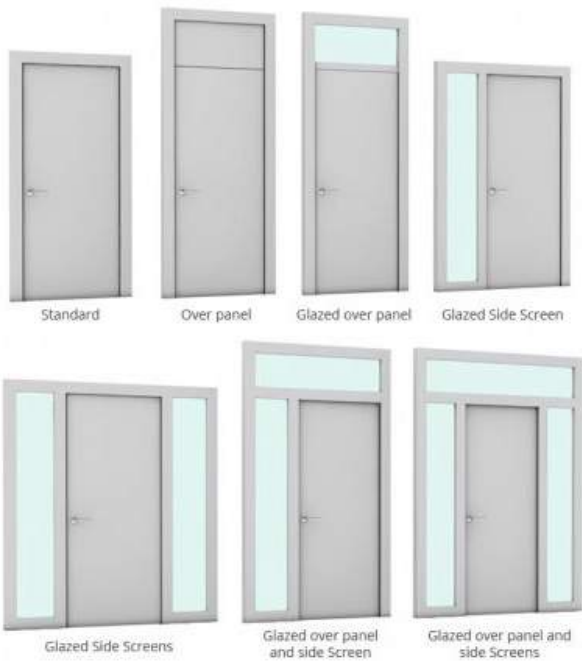
### SIZE OPTIONS

- Standard Sizes are: 404mm X 404mm and 800mm X 250mm
- Bespoke size available\*:  
Width from 150mm to 1000mm;  
Height from 200mm to 1500mm

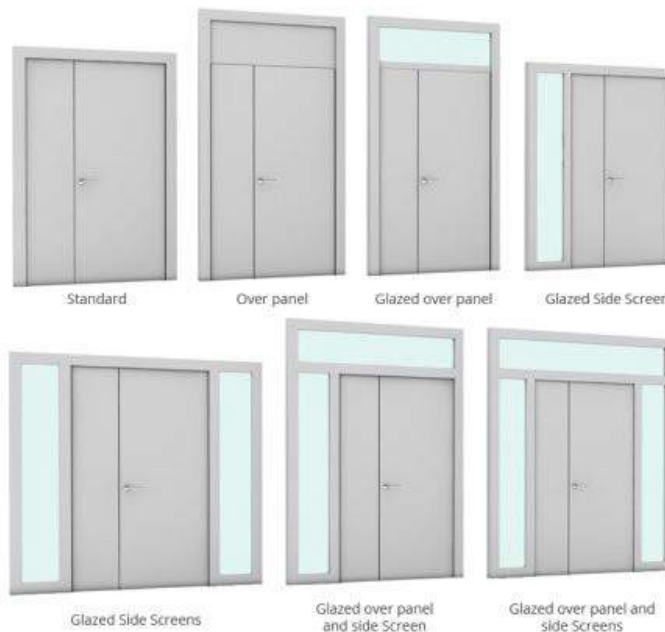
# CONFIGURATIONS

STANDARD CHOICES, BESPOKE AVAILABLE

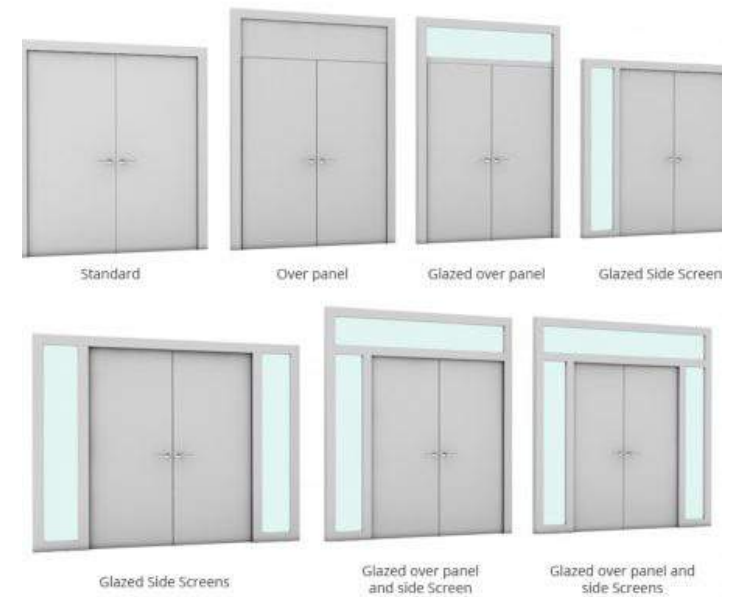
## SINGLE DOOR CONFIGURATIONS



## LEAF & HALF CONFIGURATIONS



## DOUBLE DOOR CONFIGURATIONS



Multiple screen option available, please contact us for more details - [info@aspex.co.uk](mailto:info@aspex.co.uk).



DOOR FINISH  
OPTIONS

# POSTFORMED PVC DOORSETS

Postformed PVC doorsets are fully encapsulated with protective, specialist sheets enhancing the durability, better hygiene and ease of cleaning, and scratch-resistant. These doorsets are also anti-bacterial and suitable for 'wet room' areas.

## FEATURES

- Specialistic protection for door frames
- Plastic layered protection maintains a clean safe environment
- Reduces maintenance costs by protecting the frame from damage
- Enhances durability of doorsets in bathrooms or leisure centre, protecting against the risk of swelling
- Optimises the safety of staff and patients in the event of a fire by maintaining fire integrity of the door allowing safe evacuation

## PERFORMANCE

- Fire Rating - NFR, FD30, FD60 in align with IFCC Certification scheme Class and 'O' Fire Rated; tested to BS 476 Parts 6 & 7
- Compatible with fire and acoustic performance

## DESIGN

- Available in any colour
- Vision panel option
- X-ray and electromagnetic protection option (NFR only)
- Purpose-made to sizes



# PVC

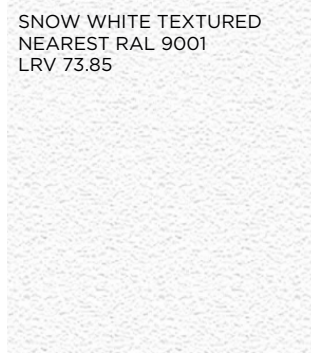
## FINISH OPTION

Choose impact-resistant, highly hygienic PVC surfaces ideal for clean rooms, washrooms and laboratories.

Other colours may be available to suit RAL codes, please contact us for more information.

### GREYS/BLACK

SNOW WHITE TEXTURED  
NEAREST RAL 9001  
LRV 73.85



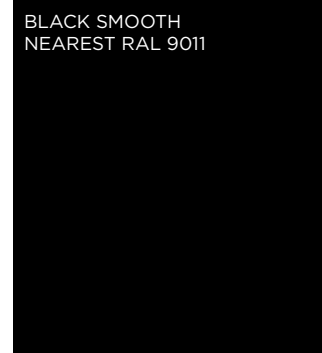
PALE GREY TEXTURED  
NEAREST RAL 7044  
LRV 51.38



STORM GREY TEXTURED  
NEAREST RAL 7037  
LRV 21.66

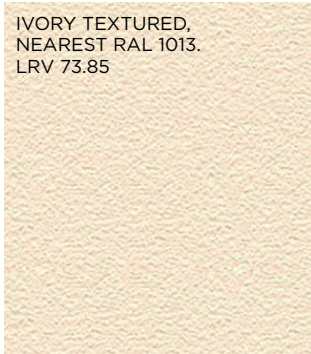


BLACK SMOOTH  
NEAREST RAL 9011



### LIGHT SHADES

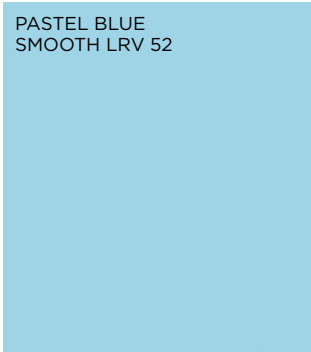
IVORY TEXTURED,  
NEAREST RAL 1013.  
LRV 73.85



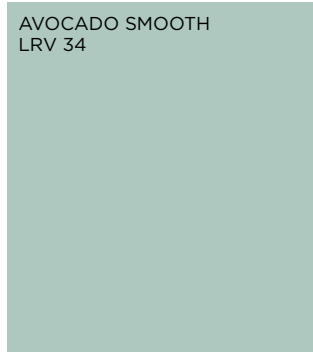
PASTEL GREEN  
SMOOTH  
LRV 70



PASTEL BLUE  
SMOOTH LRV 52

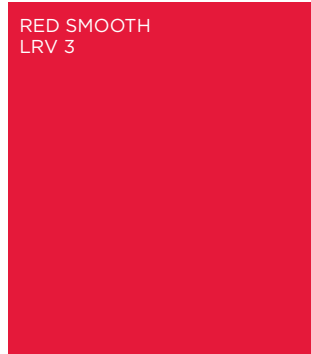


AVOCADO SMOOTH  
LRV 34

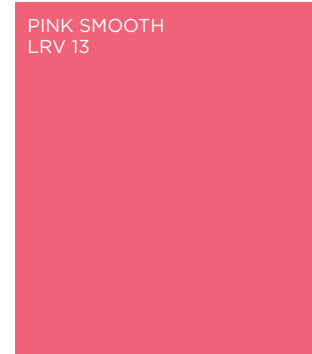


### BRIGHT SHADES

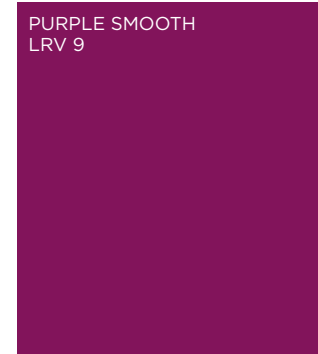
RED SMOOTH  
LRV 3



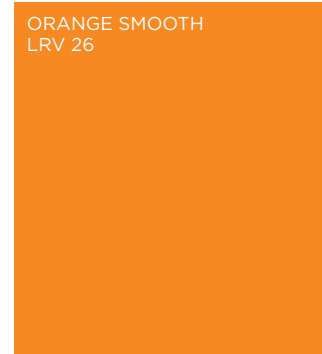
PINK SMOOTH  
LRV 13



PURPLE SMOOTH  
LRV 9



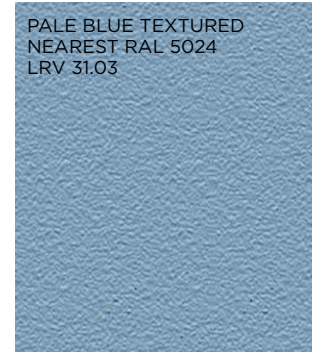
ORANGE SMOOTH  
LRV 26



TWILIGHT BLUE TEXTURED  
NEAREST RAL 5003  
LRV 8.25



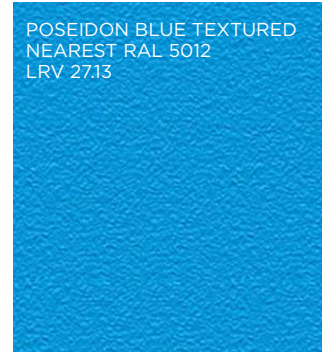
PALE BLUE TEXTURED  
NEAREST RAL 5024  
LRV 31.03



PALE GREEN TEXTURED  
NEAREST RAL 6034  
LRV 37.32



POSEIDON BLUE TEXTURED  
NEAREST RAL 5012  
LRV 27.13



# LAMINATES

## FINISH OPTION

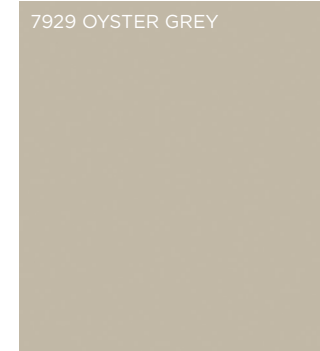
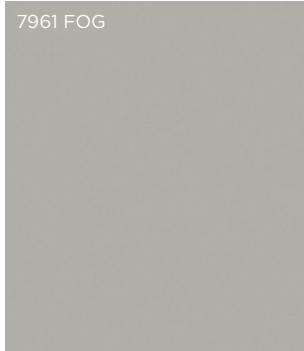
Choose beautiful laminate finishes to enhance your interiors.

Excellent range of colour or wood alike laminates.

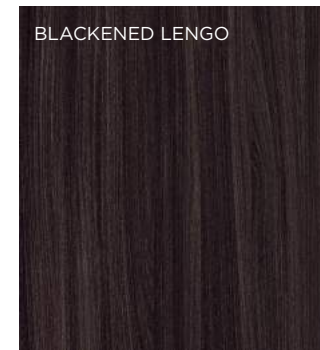
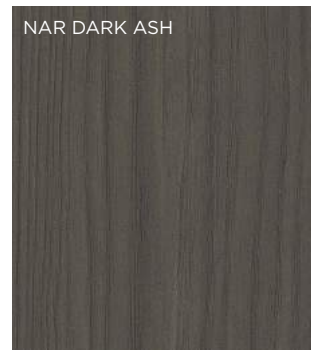
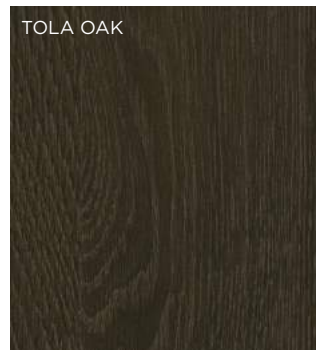
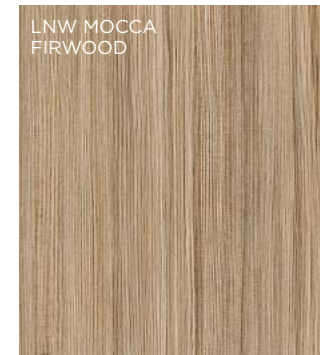
We hold an exclusive direct-supply agreement with Formica, and work with Egger and Polyrey too.

\*More options available

## COLOUR LAMINATES



## WOOD LAMINATES



# VENEERS

## FINISH OPTION

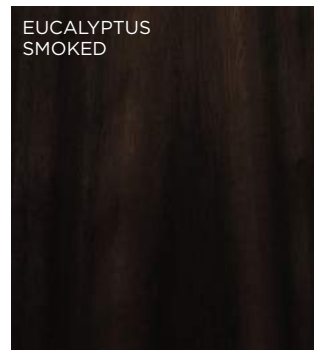
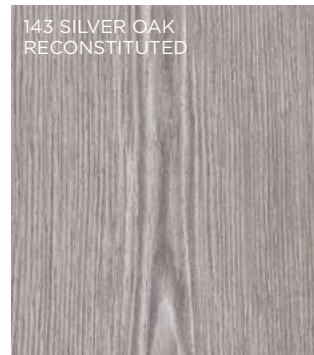
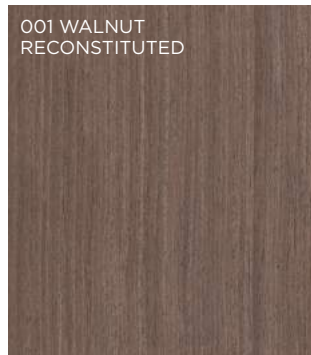
Choose luxurious veneers finishes - from natural, dyed, smoked and reconstituted finishes.

\*More options available

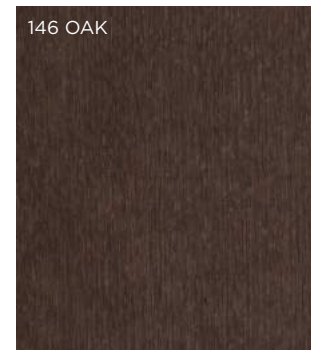
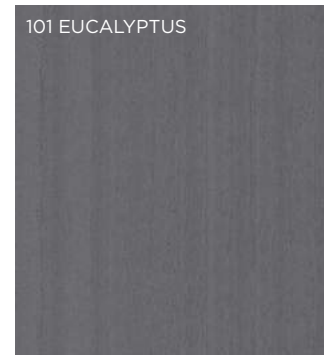
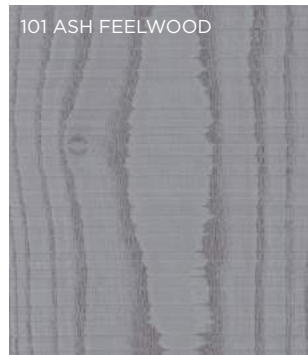
### NATURAL/EXOTIC VENEERS



### RECONSTITUTED/SMOKED VENEERS



### DYED VENEERS





# PAINT

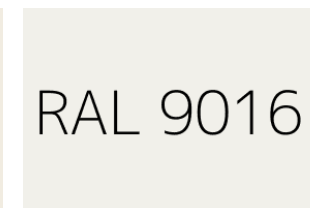
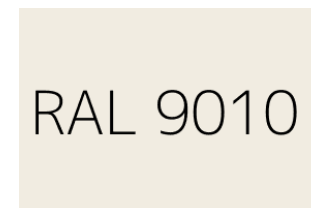
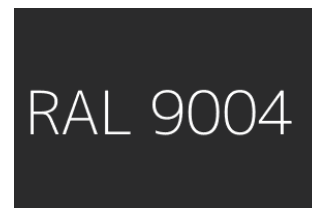
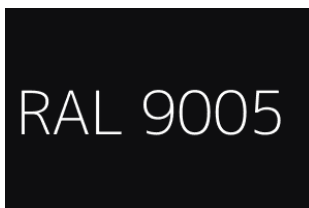
## FINISH OPTION

Choose any RAL colour to closely match your doorset to complement your interior design.

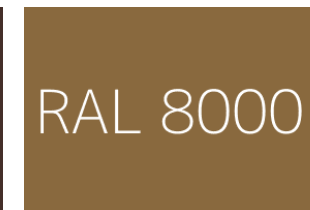
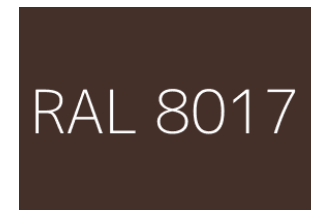
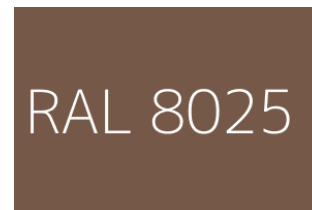
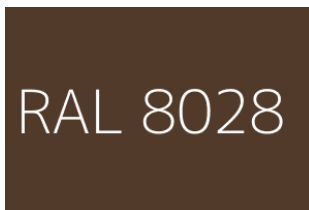
Bespoke colour options available

\*More options available

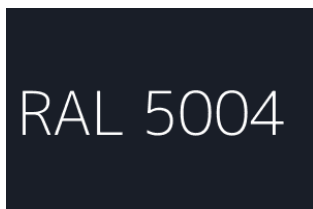
### BLACKS



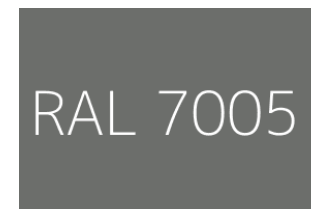
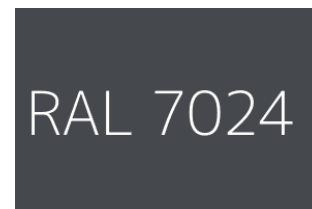
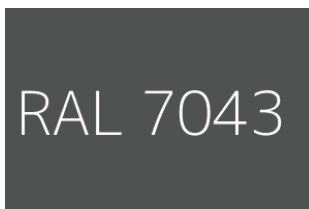
### BROWNS



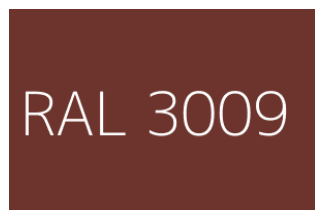
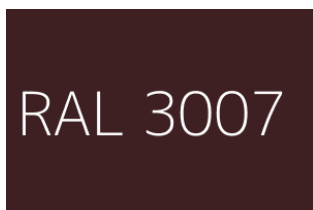
### BLUES



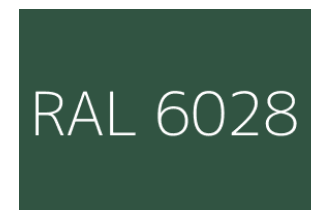
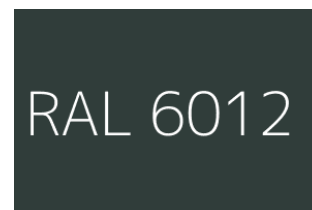
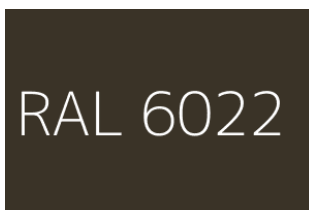
### GREYS



### REDS



### GREENS



A low-angle photograph of a modern building's exterior. The building features a grey facade with a geometric pattern and large glass windows. A white vertical panel is mounted on the wall, containing an intercom system with a speaker and microphone, a white call button with a double-line symbol, and a blue wheelchair accessibility sign that reads "PRESS TO OPEN". A red logo is visible at the bottom of the panel. The sky is visible in the background.

IRONMONGERY &  
ACCESS CONTROL

# IRONMONGERY

## PURPOSE-LED RANGE

Ultimate solution of architectural ironmongery from...

- ✓ Lever handles
- ✓ Pull handles
- ✓ Escutcheons
- ✓ Turns and releases
- ✓ Hinges
- ✓ Signage
- ✓ Locks & cylinders
- ✓ Door closers
- ✓ Panic Hardware
- ✓ Miscellaneous

Range of finishes...

- ✓ Satin stainless steel
- ✓ Polished stainless steel
- ✓ Aluminium
- ✓ Nylon
- ✓ Black
- ✓ Bronze
- ✓ Brass

**In align with relevant standards...**

- CE Marked
- BS 8300
- BS EN
- Certifire

High-performance, durable and smart ironmongery available in suitable finishes including stainless steel, aluminium, nylon. Washroom and WC fittings designed for disabled users include stainless steel, nylon and aluminium powder coating.

Resilient, quality and innovative ironmongery with finger protection, anti-bacterial and sophisticated features. Braille and tactile signage available too.



# ACCESS CONTROL

SMART, INNOVATIVE SOLUTIONS

Aspex are a proud Platinum Inspired Business Partner of Salto offering seamless, relevant and efficient solutions.

As a dedicated solution provider, we offer the complete package from - supply, installation and maintenance support.

We work a range of leading manufacturers...

**SALTO**

**ASSA ABLOY**

**Paxton**

**OMNITEC**

**alhua**  
TECHNOLOGY

**HIKVISION**



ESCUTCHEONS

XS4 One Escutcheons need no hard-wiring, battery-operated. All-in-one smart lock designed to fit on any door type & retrofits.



WALL READERS

Smart wall readers integrate with any type of access control application - doors, barriers, lifts, electronic gates etc.



CONCEALED LOCKS

Concealed electronic lock with sleek reader for door access control. It can be used with a choice of lever handle designs.



AUTOMATED DOORS

Control of automated doors integrated with access control, fire alarm systems and supporting disability access



PANIC EXIT BARS

Highest safety standards with ease of use. EN1125 compliant in combination with Salto XS4 electronic escutcheon



CAR PARK BARRIERS

Seamless integration with existing management systems. ANPR car park barrier, intercom features, keyless access possible



HEALTHCARE  
CASE STUDIES

**Here's a list of some of our healthcare projects....**

- Royal Marsden Hospital, Oak Cancer Centre
- Imaging Centre of Excellence (ICE), Queen Elizabeth University Hospital, Glasgow
- Ayr Hospital emergency department & combined assessment unit
- Crosshouse Hospital - Theatre refurbishment and Combined Assessment Unit
- St George Hospital, Milford House
- Dundee CAMHU
- Stobhill Mental Health Unit
- Stobhill Ward 47 Refurb
- Woodside Health Centre
- Clydebank Health Centre
- Greenock Health Centre
- Parkhead Health Centre

# ROYAL MARSDEN HOSPITAL

## OAK CANCER CENTRE, LONDON

### ASPEX SUPPLIED...

- 370 approx timber doorsets & 56 Novista concealed doorsets with white lamination
- Formica laminated doors with primed frames
- PVC encapsulated leadlined x-ray doors with Vistamatic panels
- Lipping and vision panel beads stained to match the selected Formica laminate
- Doorset performance - NFR, FD30, FD60, FD120
- timber doorsets

### ABOUT THE PROJECT

Oak Cancer Centre part of Royal Marsden Hospital NHS Foundation Trust, London, is a £50m new world-renowned, state-of-art cancer facility will help accelerate the development of new treatments offering hope for cancer patients worldwide.



# ICE BUILDING

QUEEN ELIZABETH HOSPITAL, SCOTLAND

## ASPEX SUPPLIED...

- Doorsets with Vistamatic vision panels
- Architectural ironmongery

## ABOUT THE PROJECT

The Imaging Centre of Excellence (ICE) is a state-of-the-art medical research facility based at the Queen Elizabeth Hospital. The facility is a nexus for academic, NHS and industrial expertise into brain imaging.



# CLYDEBANK HEALTH CENTRE

SCOTLAND

## ASPEX SUPPLIED...

- Integra internal timber doorsets
- Glazed timber screens
- Architectural ironmongery

## ABOUT THE PROJECT

Clydebank Health Centre is a £19m health facility located within the Queens Quay development area forming part of a new Health Quarter designed to bring together six local GP practices to serve 40,000 members of local population.







Let's work on specifications together, find us on...



## FREE SAMPLES

Request for door leaf samples & ironmongery sample board to see how well we can match your project requirements.  
Simply email [sales@aspex.co.uk](mailto:sales@aspex.co.uk)

## GET IN TOUCH

[www.aspex.co.uk](http://www.aspex.co.uk) | [info@aspex.co.uk](mailto:info@aspex.co.uk)  
England office: 0116 278 3506  
Scotland office: 01236 720061

**aspex**