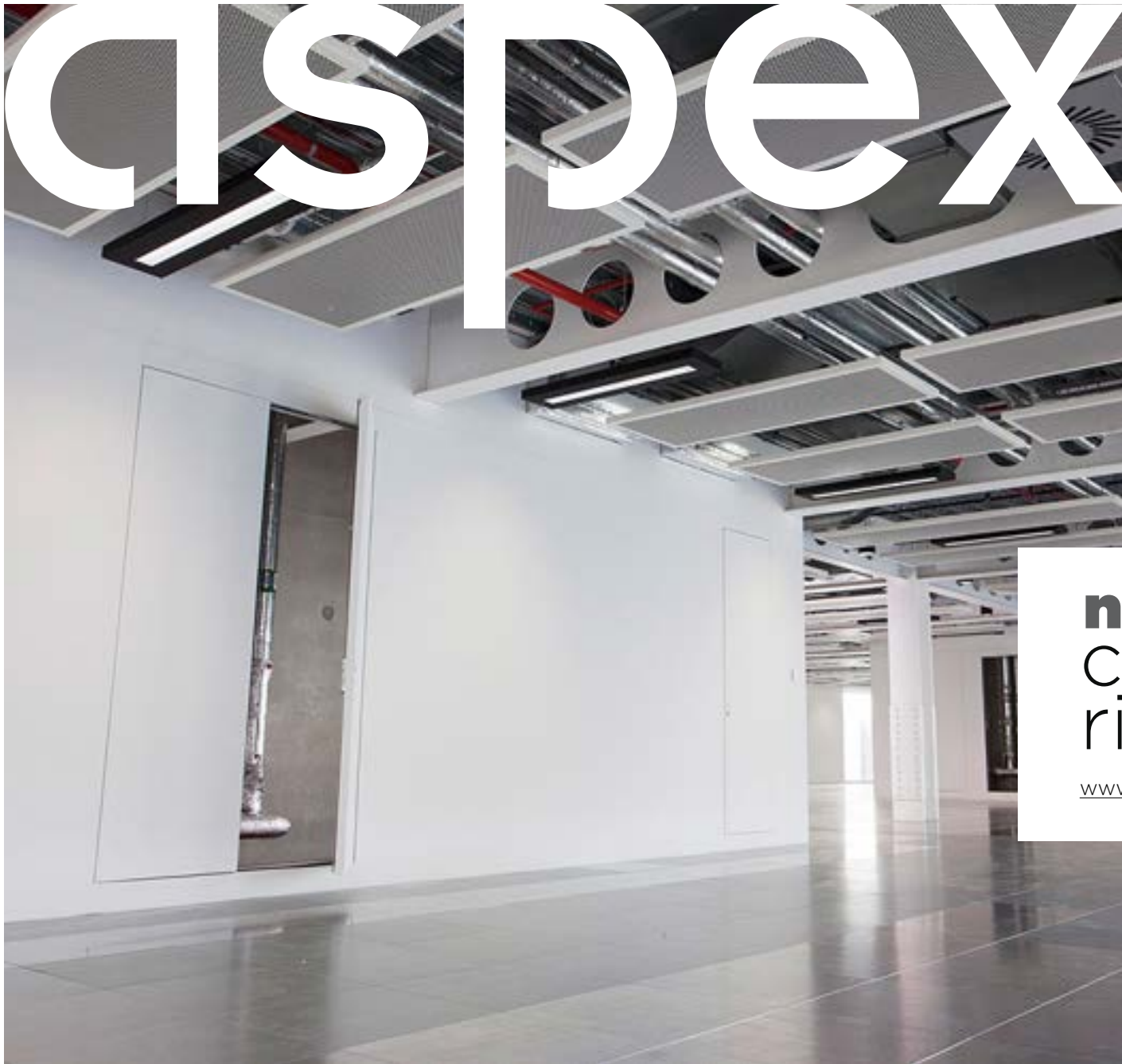


TIMBER DOORSETS

CONCEALED RISERS

ARCHITECTURAL IRONMONGERY

ACCESS CONTROL



# aspex

**novista**  
concealed  
risers

[www.aspex.co.uk](http://www.aspex.co.uk) | [sales@aspex.co.uk](mailto:sales@aspex.co.uk)

# about us

Our vision is to offer architectural excellence and this epitomises everything we do..

Aspex offers you the opportunity to add some simplicity to your construction project, as the ultimate source for timber doorsets, risers, architectural ironmongery and access control. Benefit from finding your complete doorset package from one supplier, Aspex, greatly reducing the risk of specification conflict and non-conformance.

Our experienced project consultants can help you make well-informed decisions about your project. Speak to our team about design choices, industry standard or bespoke options, estimating & scheduling, sampling, optimised delivery plans and maintenance tips and more.

**Our aim is to support you throughout design, manufacturing and maintenance, not just supply risers and doorsets.**



## 2006

Aspex was founded on a long-established family historic success and dedication within the architectural ironmongery industry

---

## 2010

Introduced access control and integrated systems division. Aspex are Platinum Inspired Business Partners of Salto and work closely with many other manufacturers to secure premises

---

## 2012

Introduced supplying timber doorsets working closely with carefully selected door manufacturers

---

## 2016

Introduced Novista concealed doorsets, pocket sliding doors and steel and timber risers

---

## 2019

Introduced manufacturing of timber doorsets in-house, primarily residential doorsets

---

## 2023

Extended factory by 40,000sqft to increase capacity and to bring the production of technical door leaves in-house; manufactured for education, healthcare and commercial sectors

---

## novista concealed system rising to perform

The name Novista is derived from the Italian for No Vista or No View, and this perfectly describes this door system with a hidden frame, which allows the door to blend in with the wall with no unsightly architraves required.

The Novista Riser system is available with either a steel or timber door leaf, with a steel door frame that is concealed within the stud or block wall, and is completely invisible when the door is in the closed position.

The Novista Riser system is suitable for a wide range of applications including ducts, risers, cupboards and for access to bathroom pods, and has been extensively fire tested up to FD60 for timber doors and FD120 for steel doors.

The Novista Riser range includes doorsets with either a steel or timber door leaf, and both of these have their own unique attributes, making the system suitable for a wide variety of projects.





## steel or timber? options

### NOVISTA STEEL RISER

- Fully concealed steel frame
- Steel door leaf either primed or pre-painted to any RAL colour
- Three or four-sided frames
- Quick release pivot system
- Single, double, triple, quadruple, quintuple and sextuple configurations
- Tall and wide doors available
- FD120 fire rated as standard
- 41dB acoustic rated as standard
- Square key or europrofile lock options

Fire	FD120 as standard
Acoustic	41dB as standard
Size	Maximum 2960mm high and 5840mm wide with a sextuple

### NOVISTA TIMBER RISER

- Fully concealed steel frame
- Solid timber door leaf with primed paper face, which is easy to paint on site to match the adjoining wall
- Veneered, laminated, PVC faced or pre-painted to any RAL colour
- Single and double configurations
- Door leaf opens to 180 degrees
- Three or four-sided frames
- FD60 fire rated
- Square key or europrofile mortice lock options

Fire	FD30 or FD60
Acoustic	35dB Maximum
Size	FD30 Maximum 2500mm high and 880mm wide or 2200mm high and 2000mm wide with a double  FD60 Maximum 2420mm high and 850mm wide or 2100mm high and 2000mm wide with a double





**Novista Steel Riser** doorset as standard is FD120 Fire rated and 41dB Acoustic rated, and the multiple door leaf system can be used for very wide structural openings with a single frame around the outside and no supporting posts.

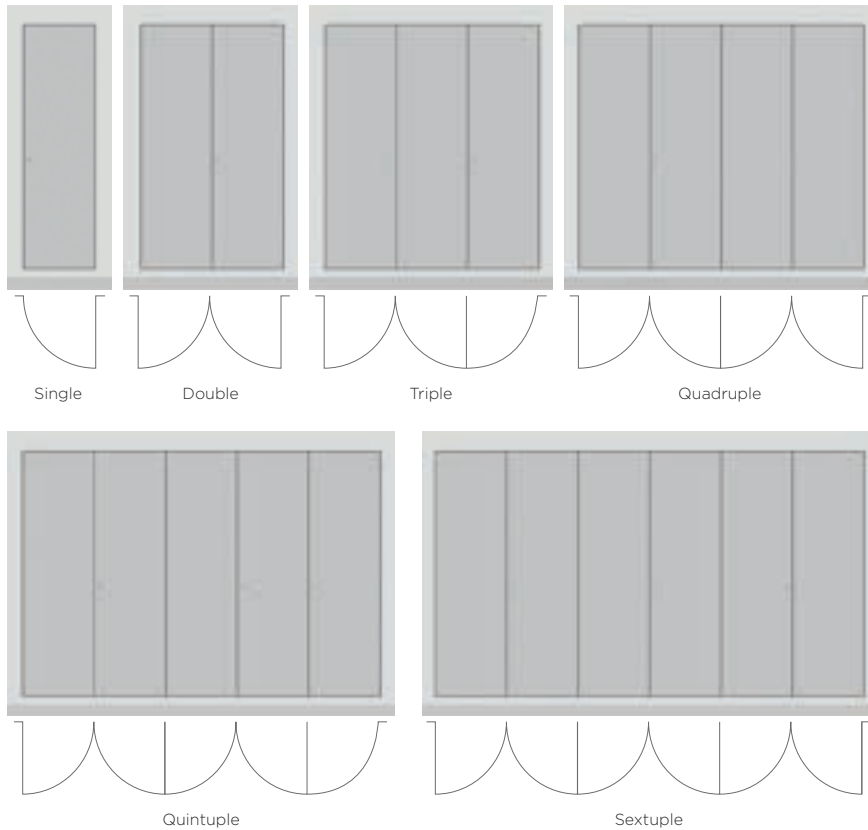
Tall full height doors of up to 2960mm high are a feature of this system. They can be up to 5840mm wide in a sextuple configuration and are fully certified up to FD120, tested from both directions.

- FD120 fire rated (BS EN1634-1)
- Fire tested from both directions
- 41dB acoustic rated
- Sa smoke classification
- Class 2 air permeability
- Three or four sided frames
- Quick release pivot system
- Single, double, triple, quadruple, quintuple and sextuple configurations
- Tall and wide doors available
- Square key or europrofile lock options
- Factory painted or primed for painting on site

# novista riser steel configurations

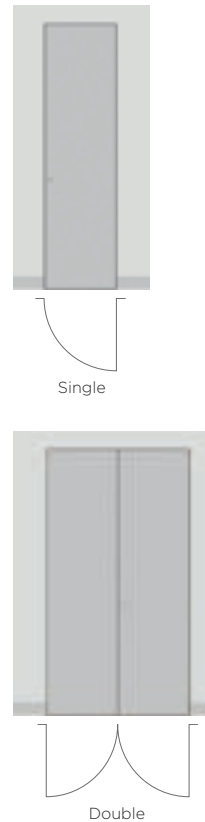
## 4 Sided Frame

Novista Riser Steel system with a four-sided frame is available as a single, double, triple, quadruple, quintuple or sextuple doorset with a single frame and no supporting pillars.



## 3 Sided Frame

Novista Riser Steel system with a three-sided frame is available as a single or double doorset.





# novista riser steel frame types

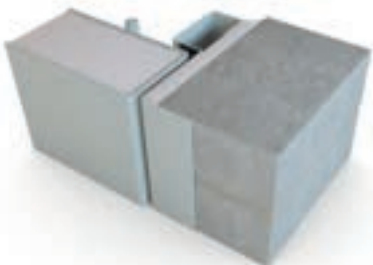
## PERFORATED FRAME



The Novista Riser system as standard has a frame with a perforated flange with an integral corner bead that sits on the face of the plasterboard or block wall, and this is then plastered or tape and jointed. The frame is manufactured from galvanised steel and this is supplied either factory painted or primed.

It is important that the screws that pass through the flanges to fix the front of the frame into place locate into the stud or a solid structure. If this is not possible because the aperture has been lined with two or more layers of plasterboard, a wider flange can be provided.

## PICTURE FRAME



The Novista Riser system is also available with a picture frame, and this can be used when the doorset is installed into a block wall or an existing opening.

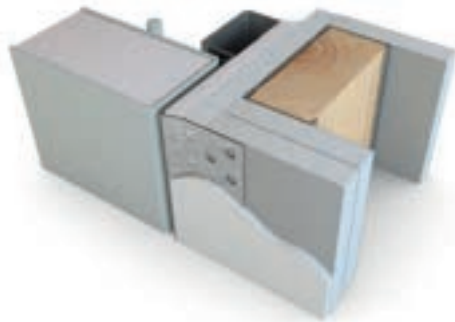
# novista riser steel configurations

## WALL TYPES

The Novista Riser Steel doorsets have been successfully fire tested in various different flexible and rigid wall constructions and as a result they can be installed in blockwork, timber stud, metal stud or shaft walls appropriate to the required fire certification.



Stud Wall - Aperture not lined



Stud Wall - Aperture lined



Shaft Wall



# novista riser steel add-on option

## INTU FRAME

### DRY-INTUMESCENT FRAME

Factory-fitted to riser frames, the dry intumescent seal expands behind the frame to seal tolerance gaps up to 15mm in event of fire, taking the place of fire foam. Fire rated to FD120

### BI-DIRECTIONAL FIRE-TESTING

In line with current construction trends, Novista Risers are tested from both directions of attack from fire when fitted with intu-frame protection option



# novista riser steel add-on option

## CONCEALED FLIP LOCK

Flip lock hides chosen lock mechanism behind a flush hinged pocket.  
FD60 fire rated and bi-directionally tested



# novista riser steel door system

## RESTRICTOR

This device limits the opening angle of the door leaf to 90 degrees and prevents one door from being opened too far, which can result in damage.

The Restrictor can be either factory installed or retro fitted to the door and frame, which as standard have threaded holes for the machine screws. A quick release mechanism means that they can easily be disengaged if the door leaf is being removed.

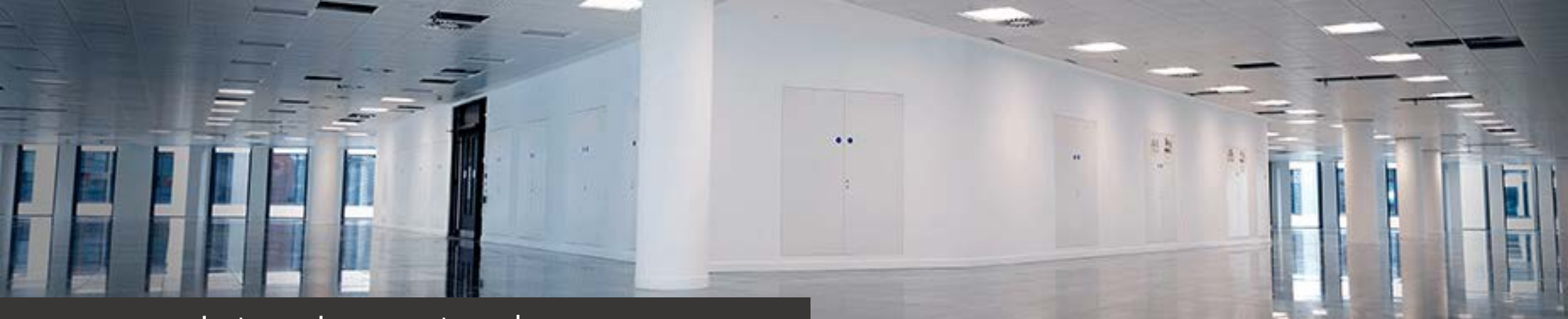


## FIRE SIGNAGE

It is a mandatory requirement that all fire rated doors have an appropriate fire sign with white letters and a blue background.

There are two standard options: a 75mm self adhesive rigid PVC disc, which is fixed to the face of the door, or the “Lollipop” type, which is fixed to the leading edge of the door leaf.





## novista riser steel locking

The doors are locked using a three-point locking system that has top, bottom and side bolts operated by a square key.

A europrofile cylinder can also be added to provide additional security. This can be integrated into a master key system if required.

The inactive leaf of double doors is secured using top and bottom flush bolts mounted into the edge of the door leaves.



Standard Lock



Europrofile Lock



Flush Bolt





# novista riser steel door system

## ASSEMBLY/INSTALLATION

A unique feature of the Novista Riser Steel door frames is that they are supplied in kit form, which results in them being very easy to move around site and store. Door frames up to 2700mm wide are supplied in four sections, which can be assembled in a matter of minutes using our bespoke connecting system and, once completed, the frame is very rigid and ready for installation into the wall.

Door frames that are wider than 2700mm are supplied with the bottom and top sections in two pieces to allow for easy transportation and movement on site, and these are fixed together using our simple jointing system

## HANGING

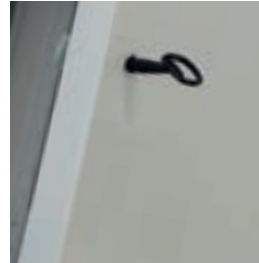
Once the frame is fitted into the structural opening, the Novista Riser Steel door leaf is hung on a bottom pivot, and at the top a sprung loaded pin locates into a hole in the frame head, making it easy to install, even if it is very tall.

To remove the door leaf, the top pin is retracted and this can then be lifted off the bottom pivot.





## novista riser steel finishes



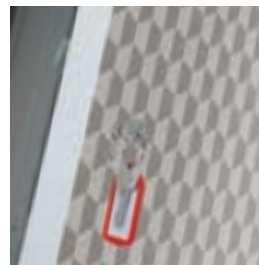
### **PRIMED**

The Novista Riser Steel doorsets as standard have a primed finish, which has been developed to provide maximum adhesion of any emulsion paint to the steel door leaf, and this has been approved by AkzoNobel. The emulsion paint can be applied to the door and frame using either a brush or roller, allowing it to blend in with the adjoining wall.



### **FACTORY FINISHED**

The door leaf and frame can be supplied in a standard PPC white finish (RAL9010) or, alternatively, any RAL colour. The Polyester Powder Coated (PPC) finish provides a robust alternative to conventional paint and is very hard-wearing.



### **WALLPAPERED**

The Novista Riser doorsets have been fire tested with a variety of different wallpapers applied to the door leaf, which enables these to blend in with the adjoining wall.

# novista riser steel performance

## FIRE

The Novista Riser Steel doorsets have been extensively fire tested in various configurations at Warrington Fire's test laboratory in High Wycombe to the European standard BS-EN1634-1

The result of these tests is that the Novista Riser Steel doorsets are as follows:

- FD120 as standard
- Successfully tested from both directions
- Suitable for metal stud walls, timber stud walls, shaft walls or block walls
- Up to six leafs can be included in a single frame
- Three or four-sided frame
- FD30 and FD60 apertures do not have to be lined with plasterboard
- Different methods to fire-stop the void between the frame and wall are permitted, including Rockwool, foam and our market-leading intu-frame system

The details on the permitted sizes and configurations for the Novista Riser Steel doorsets are included in a Field of Application report that has been produced by the third-party accredited certification company International Fire Consultants (IFC).

## FRAME/WALL GAP

It is very important that the gap between the back of the door frame and the wall is filled with the correct material to ensure that the Novista Riser doorset achieves the required fire rating.

Information on the tested options are detailed in the Fire Stopping data sheet, which can be found on [aspex.co.uk](http://aspex.co.uk)

## SMOKE

The Novista Riser Steel doorsets have a neoprene compression seal that the door leaf closes onto, and this prevents cold smoke from passing through the doorset.

The doorsets have been tested to the EN1634-3 standard and have an EN13501-2 classification of Sa (cold smoke).



## ACOUSTIC

The Novista Riser Steel doorset has an insulated door leaf and a rubber compression seal on all four sides of the door frame and, as standard, these have been independently tested and have achieved an acoustic rating of 41Db.



# novista timber riser door system

The Novista Riser doorset with a concealed frame and timber door leaf has been developed to help blend access and riser doors into the adjoining wall so that they are virtually invisible with no architrave.

The Novista Riser Timber door leaf has a solid core and hardwood lippings on all four edges and is very robust and durable. The leaf is fitted with the intumescent strips, locks and flush bolts installed.

The Novista Riser Timber doorsets are available with either standard or concealed hinges with a maximum fire rating of FD60S and a maximum acoustic rating of 35dB.

- NFR, FD30 or FD60 fire rated
- 32dB or 35dB acoustic rated
- Sa smoke classification
- Class 2 air permeability
- Three or four-sided frames
- Single or double configurations
- Square key or europrofile lock options
- Factory painted, primed, laminated or veneered finishes available



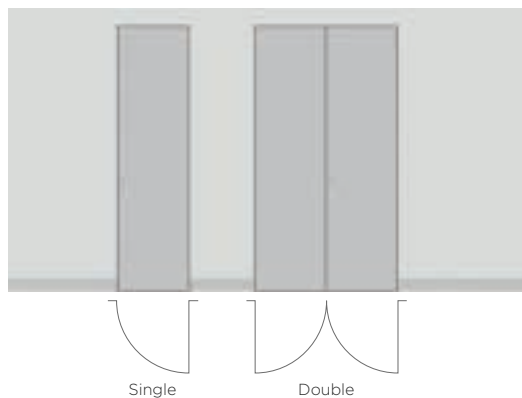




## novista riser timber configurations

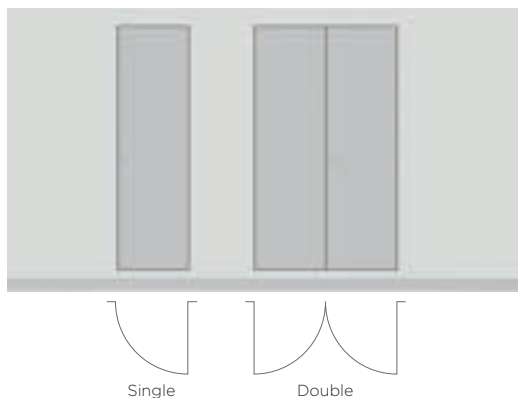
### 3 Sided Frame

The Novista Riser Timber doorset system with a three-sided frame is available as a single or double doorset.



### 4 Sided Frame

The Novista Riser Timber doorset system with a four-sided frame is available as a single or double doorset.



# novista riser timber frame types

## PERFORATED FRAME

The Novista Riser Timber doorset has a frame with a perforated flange with an integral corner bead that sits on the face of the plasterboard or block wall, and this is then plastered or tape and jointed. The frame is manufactured from galvanised steel and this is supplied either factory painted or primed.

It is important that the screws that pass through the flanges to fix the front of the frame into place locate into the stud or a solid structure. If this is not possible because the aperture has been lined with two or more layers of plasterboard, a wider flange can be provided.



## WALL CONSTRUCTION

The Novista Riser Timber frame has pockets at the back of the frame to house the concealed hinges and lock box. A section of the wall will need to be cut away to allow the frame to be installed.

We recommend that either a double vertical stud is used or a 30mm packer is mounted on top of the stud with the plasterboard for the wall on top. The wall manufacturer should be consulted to ensure compliance with the fire certification.



# novista riser timber installation

## ASSEMBLY

A unique feature of the Novista Riser Steel door frames is that they are supplied in kit form, which results in them being very easy to move around site and store.

Door frames up to 2700mm wide are supplied in four sections, which can be assembled in a matter of minutes using our bespoke connecting system. Once completed, the frame is very rigid and ready for installation into the wall.

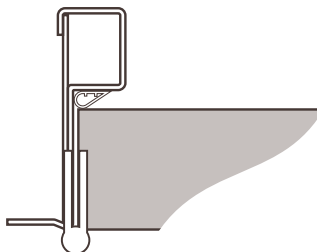
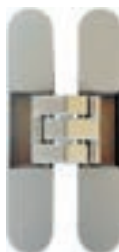
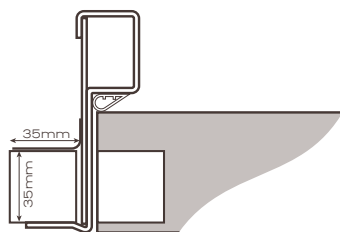
Door frames that are wider than 2700mm are supplied with the bottom and top sections in two pieces to allow for easy transportation and movement on site, and these are fixed together using our simple jointing system.

## HANGING

The Novista Riser Timber doorsets are available with either standard or concealed hinges for FD30 and FD60 doorsets, and these are fixed into pre-prepared cutouts in the frame and door leaf.

### CONCEALED HINGES

These hinges can be used with the NFR, FD30 and FD60 doorsets. These allow the door to open to 180 degrees and are completely invisible when the door is closed. The hinges are three-way adjustable, which makes it very easy to align the door leaf and attain a consistent gap all the way round.



### STANDARD HINGES

These stainless steel 102x76mm ball bearing hinges can be used with the NFR, FD30 and FD60 doorsets and allow the door to open to 180 degrees.



# novista riser timber door system

## LOCKING

The doors are supplied as standard with a mortice lock that is operated by a square key or, alternatively, a europrofile version is available.

### STANDARD LOCK

This lock has an 8mm square follower, which is operated by a T key, and a stainless steel ferrule escutcheon is available either with or without a swing cover.

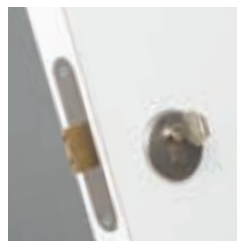
### EUROPROFILE LOCK

This deadlock is suitable for a single europrofile cylinder, which provides additional security and enables the doors to be integrated into a master key system if required.

The inactive leaf of the double doors is secured by using flush bolts top and bottom, which are mounted in the edge of the door leaf.



Standard Lock

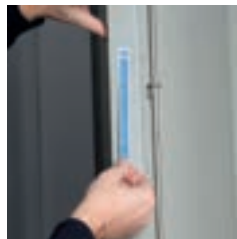


Europrofile Lock

## FIRE SIGNAGE

It is a mandatory requirement that all fire rated doors have an appropriate fire sign with white letters and a blue background.

There are two standard options: a 75mm self adhesive rigid PVC disc, which is fixed to the face of the door, or the "Lollipop" type, which is fixed to the leading edge of the door leaf.







## novista riser timber performance

### FIRE

The Novista Riser Timber system has been fire tested by BS476 - Part 22 for FD30 door leaves up to 2500mm high and 1000mm wide for singles and 2000mm wide for doubles. FD60 doorsets have been tested to 2200mm high and 930mm wide for singles and 1860mm wide for doubles.

### ACOUSTIC

The Novista Riser Timber doorset is supplied with a solid core door leaf as standard, and with the perimeter seals it can achieve an acoustic rating of 35dB.

### SMOKE

The Novista Riser Timber doorsets have a neoprene compression seal that the door leaf closes onto, which prevents cold smoke from passing through the doorset. The doorsets have been tested to the EN1634-3 standard and have an EN13501-2 classification of Sa (cold smoke).

### FRAME/WALL GAP

It is very important that the gap between the back of the door frame and the wall is filled with the correct material to ensure that the Novista Riser doorset achieves the required fire rating.





## novista riser timber installation/wall types

The Novista Riser Timber doorsets have been successfully fire tested in various different flexible and rigid wall constructions, and as a result, they can be installed in blockwork, timber stud or metal stud walls appropriate to the required fire certification.

The Novista Riser Timber frame has pockets at the back of the frame to house the concealed hinges and lock box. A section of the wall will need to be cut away to allow the frame to be installed.

We recommend that a double vertical stud is used or possibly a 30mm packer is mounted on top of a single stud. The wall manufacturer should be consulted to ensure compliance with their fire certification.

If a shaft wall system is being used, additional layers of plasterboard can be used. However a wider flange will be required to ensure that the screw fixing at the front locates into the stud.



Stud Wall - Double stud



Stud Wall - Timber packer

# novista riser timber finishes

## PRIMED

The Novista Riser Timber door leafs as standard have a primed Kraft paper face, and this can easily be painted on site to match the adjoining wall.

## VENEERED



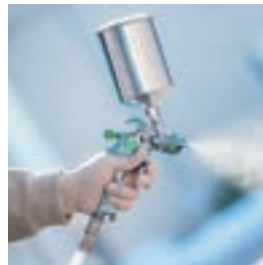
The door leaf can be supplied with a veneered face and matching lippings.

## LAMINATED



A wide range of high-pressure laminates are available in a solid colour or wood grain finish from either Egger, Formica or Polyrey.

## FACTORY PAINTED



The door leaf can be supplied painted to an RAL colour

## WALLPAPER



The primed door leaf has a paper face. This is ideal for the wallpaper of your choice to be applied to enable the door leaf to blend in with the adjoining wall.





Let's work on specifications  
together, find us on...



NBS Chorus



NBS Source  
PARTNER

## FREE SAMPLES

Samples available of risers, timber doorsets & ironmongery to  
showcase how well we can match your project requirements.  
Simply email [sales@aspex.co.uk](mailto:sales@aspex.co.uk)

## GET IN TOUCH

[www.aspex.co.uk](http://www.aspex.co.uk) | [sales@aspex.co.uk](mailto:sales@aspex.co.uk)  
England office: 0116 278 3506  
Scotland office: 01236 720061

aspex